

PART OF NE 1/4 OF SEC. 32, T.6N., R.2W., S.L.B & M.
HADLEY SUBDIVISION

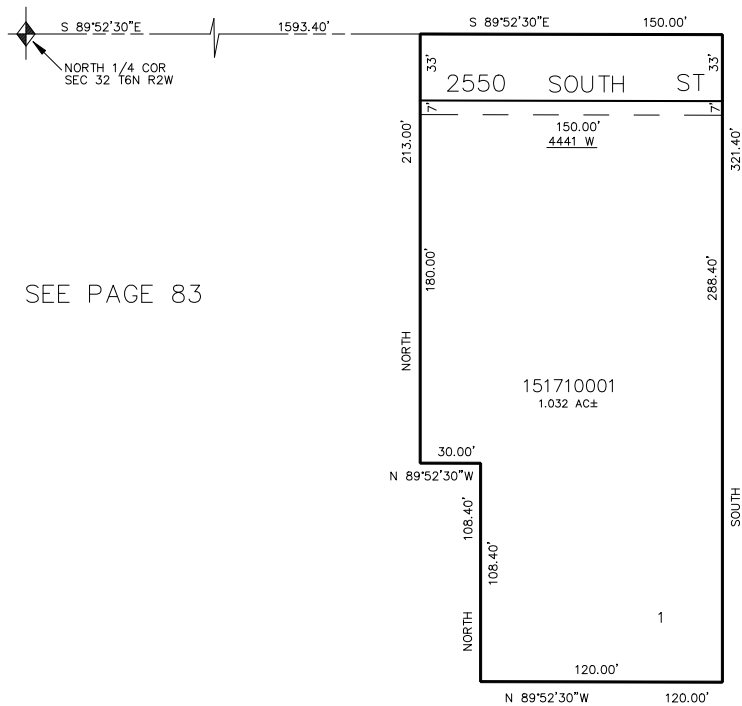
171

IN WEBER COUNTY

TAXING UNIT: 53

SCALE 1" TO 50'

SEE PAGE 83



SEE PAGE 83

SEE PAGE 83

SEE PAGE 83

FOR COMPLETE ENG. DATA SEE
ORIG. DEDICATION PLAT IN
BOOK 28, PAGE 53 OF RECORDS.